

OPTION 4 - RECREATION EAST ADDITION

CONCORD PROPERTY

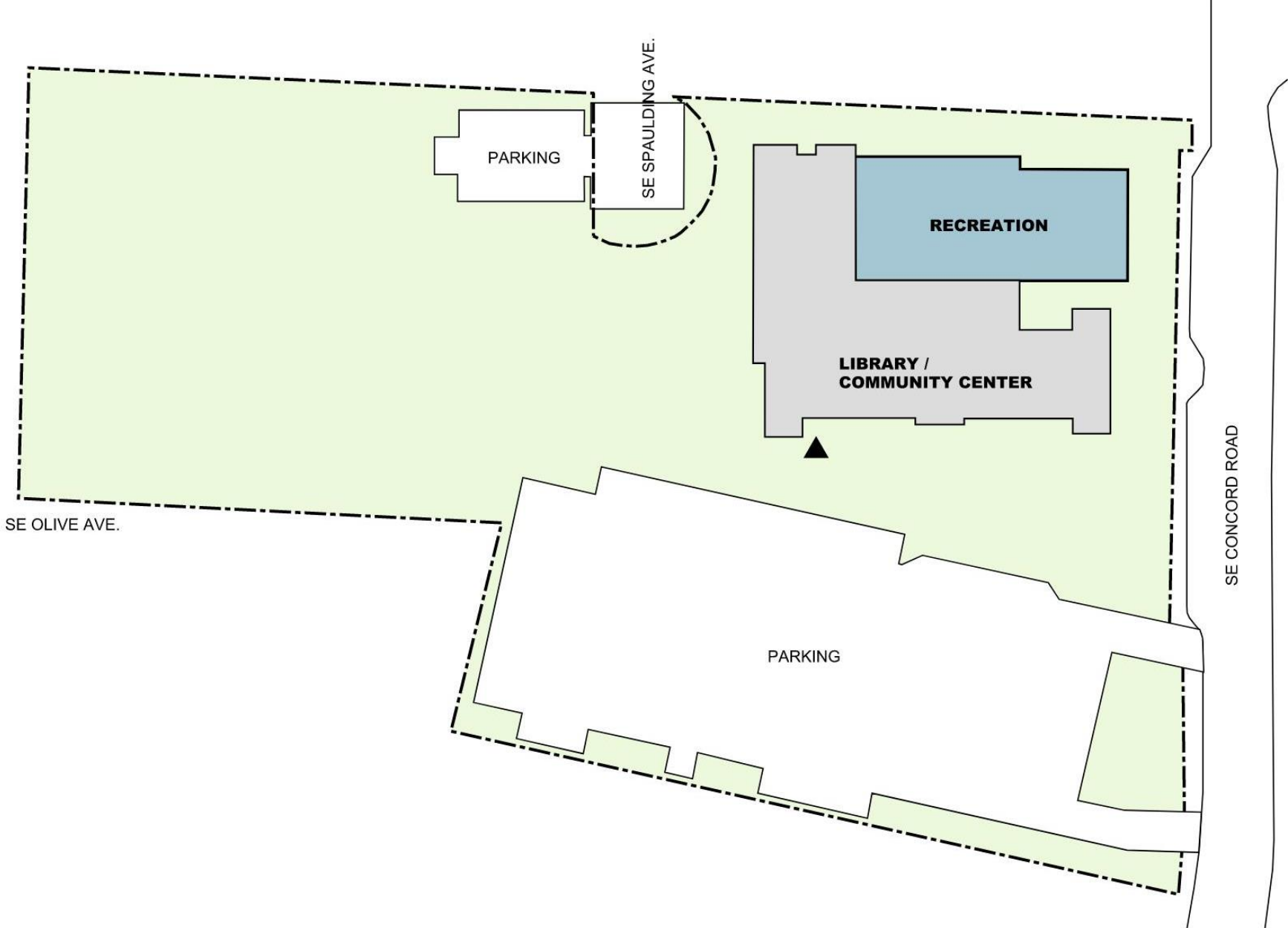


PARKING : 177 STALLS
OPEN PARK AREA: 1.96 ACRES



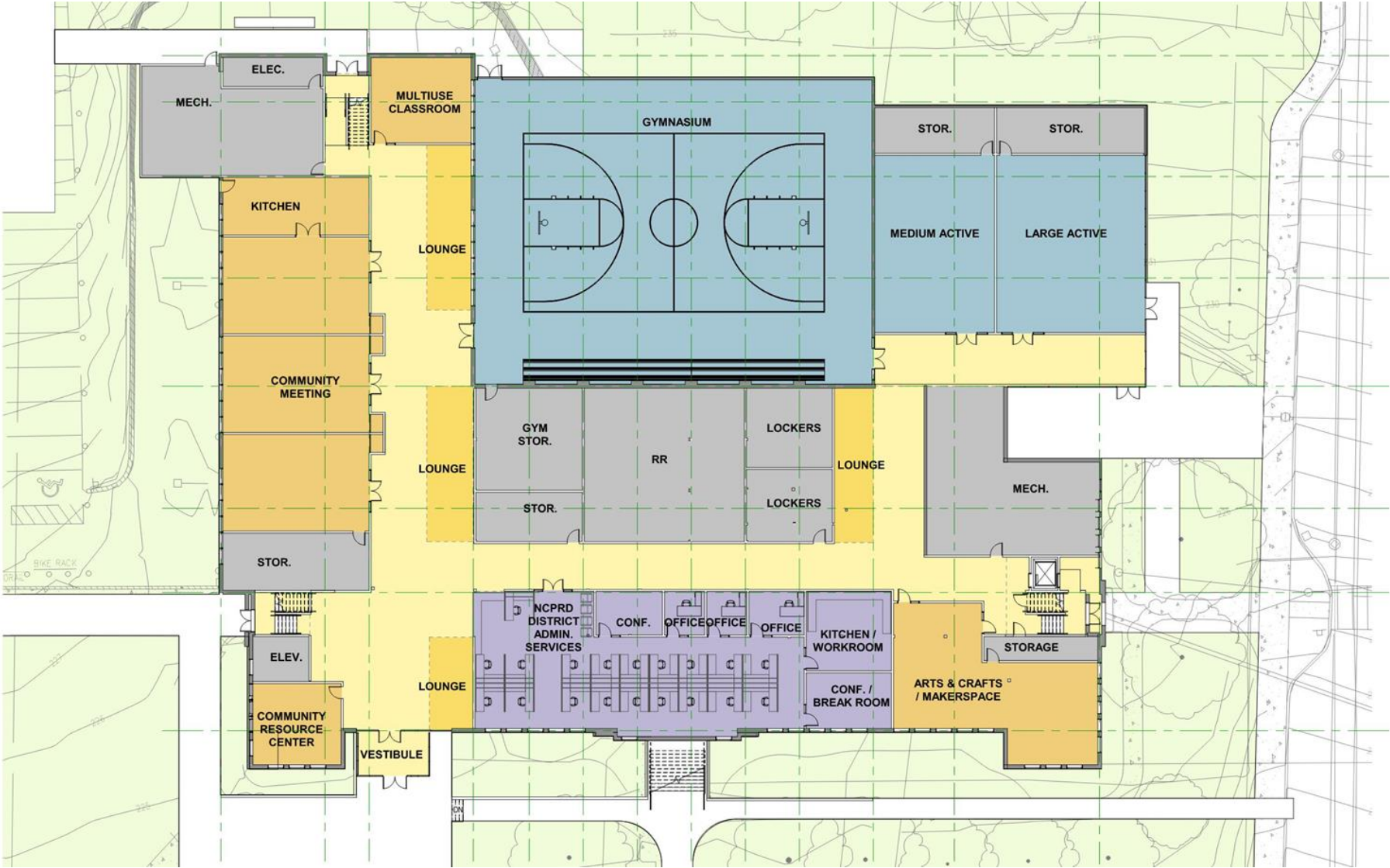
OPTION 4 - RECREATION EAST ADDITION

CONCORD PROPERTY

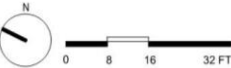


OPTION 4 - RECREATION EAST ADDITION

CONCORD PROPERTY



COMMUNITY CENTER / OFFICES
LOWER LEVEL



OPTION 4 - RECREATION EAST ADDITION

CONCORD PROPERTY



LIBRARY / COMMUNITY CENTER
UPPER LEVEL

