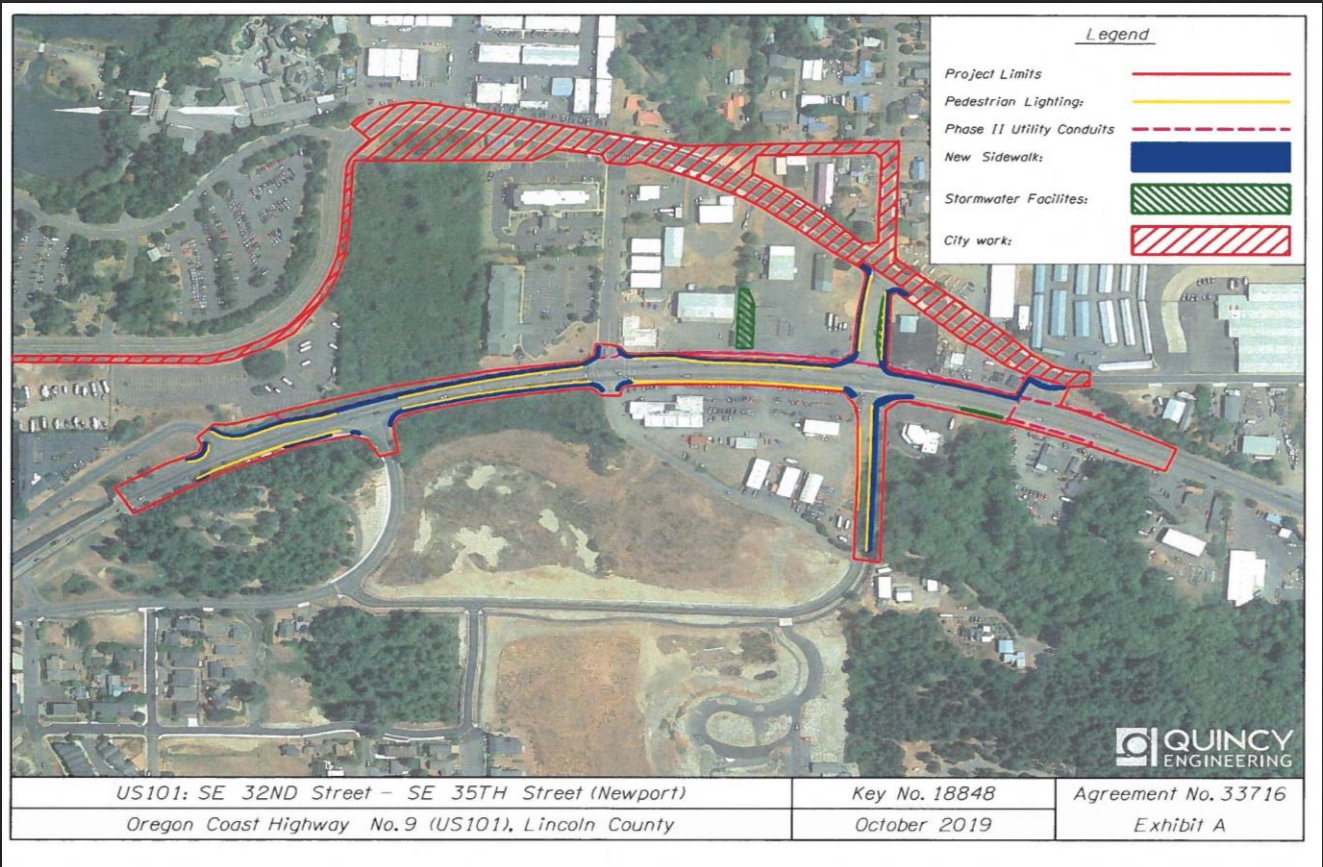


# City/ODOT – Hwy 101/32nd St Signal Relocation Project



- ◇ Signal to be relocated from SE 32<sup>nd</sup> to SE 35<sup>th</sup> and US 101
- ◇ New 35<sup>th</sup> St to be built from Abalone to SE Ferry Slip Rd
- ◇ SE Ferry Slip Rd approach onto US 101 to be closed and landscaped
- ◇ Sidewalk to be constructed on both sides of US 101 from bridge to SE Ferry Slip Rd
- ◇ Multi-use path to be extended from Abalone across US 101 at 35<sup>th</sup> St signal to existing path at SE Ferry Slip Rd
- ◇ Utilities to be undergrounded along Ferry Slip (red hatch on map) and along US 101
- ◇ US 101 paved areas to be rebuilt from bridge to SE Ferry Slip Rd
- ◇ Construction begins Dec/Jan and to finish Fall of 2021
- ◇ Budget \$4.71 Million (\$2.36 Million from Agency)