



Mile Post 49.2 to Mile Post 57.45 U.S. 26 MT. HOOD HIGHWAY Safety and Preservation Project

MARCH 2016

2016 Season Starting Soon

Construction of the final season of the U.S. 26 Mt. Hood Safety Project began in mid-March. This season, K&E Excavating will continue to work along the slopes along U.S. 26 west of Government Camp between east of Kiwanis Camp Road and east of Mirror Lake, pave U.S. 26 and place a barrier between the east and westbound lanes.

Work will take place Monday through Saturday and could take place around-the-clock. This could change during the course of the project. Road and trail closures and flagging will not occur on major holidays or Sundays.

Work Completed in 2015

K&E Excavating worked along U.S. 26 in 2014 and 2015. Here is what they accomplished during that time:

- ▶ 289,000 cubic yards of rock and dirt excavated
- ▶ 67,000 linear feet of blasting holes drilled
- ▶ 51,000 pounds of explosives used
- ▶ 69,000 square yards of slope matting applied
- ▶ 11 acres of native grass seed applied to slopes
- ▶ Four acres of permanent seed applied to slopes
- ▶ 314 trees from the sections of removed slopes used for fish restorations in nearby creeks
- ▶ 550 hours of loose rock removal by workers on ropes
- ▶ 6700 feet of rock bolt installations on slopes
- ▶ 2600 tons of asphalt placed on U.S. 26
- ▶ 350 tons of asphalt patching on Lolo Pass Road

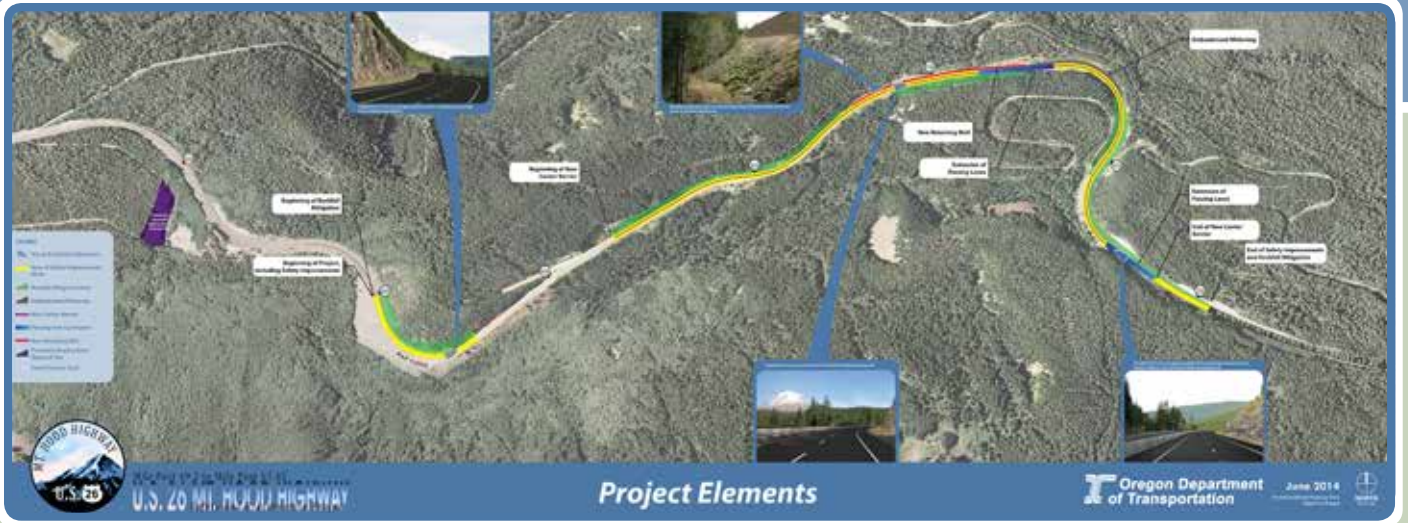
Remaining Work

ODOT and K&E Excavating plan to accomplish the following work before late fall 2016 including:

- ▶ Rockfall improvements including building a catchment area, west of the runaway truck ramp at Map Curve
- ▶ Build a retaining wall to protect historic Pioneer Bridle Trail
- ▶ Highway widening to place a barrier between the east and westbound lanes along a 1.6 mile stretch of U.S. 26 between east of the runaway truck ramp to east of the Mirror Lake Curves, and to lengthen the westbound passing lanes
- ▶ Pave an eight mile section of U.S. 26 between the west end of the project and OR 35
- ▶ Construct drainage improvements



Visit the online open house at
www.US26MtHoodSafety.org
starting March 21 to learn more.



Impacts to Travel

Construction will delay travel through the area. However, you will still be able to get to where you are going. Here is what to expect so you can plan to avoid delays.

Lane closures begin March 14. Starting after April 1st Expect:

- ▶ Closures up-to one hour from 5:30-7:30 p.m. Monday's, Tuesday's and Thursday's on U.S. 26 west of Government Camp for rock blasting.
- ▶ Around-the-clock lane closure on U.S. 26 from east of Kiwanis Camp Road to east of Mirror Lake.
- ▶ Increased truck traffic on Lolo Pass Road and Trillium Lake Road.
- ▶ Flagging and up-to 20 minute traffic stops anytime the contractor is working.
- ▶ Daytime and nighttime work.
- ▶ Occasional 24-hour flagging.

*Once determined, exact blast closure dates will be posted at www.us26mthoodsafety.org



Be Safe in Work Zones

Travelers along U.S. 26 will encounter narrow lanes, flaggers directing traffic and road closures. The speed limit will remain 45 miles-per-hour during construction. Slow down and travel safely in the work zone so you can reach your destination and the workers on the road can work in a safe work area.

Increased Truck Traffic on: Lolo Pass, Trillium Lake Roads, and Others

Trucks will haul rocks, trees and other materials from the slopes of U.S. 26 to several sites on Mt. Hood. We apologize for the inconvenience.

Here are some things you can do to stay safe when sharing the road with trucks:

BE VISIBLE: If you are walking, jogging, riding a bike or riding a horse, be as visible as possible and wear reflective clothing.

LISTEN: Be aware of the sounds of oncoming trucks and do not use head phones that could block the sound of trucks approaching.

WATCH FOR BLIND SPOTS: When riding a bike, ride with traffic and in the middle of the travel lane so you do not end up in a truck's blind spot.

WALK FACING TRAFFIC: When walking, walk on the opposite side of the road to keep your eye on oncoming traffic and to be more easily seen.

PULL OUT SAFELY: When pulling out of your driveway onto the haul roads, stop fully and look for trucks and other road users before proceeding. Consider parking so that you can pull out, rather than back out, of your driveway in order to increase your ability to see oncoming trucks.



Stay Away from Blasting Zones

ODOT will close U.S. 26, nearby trails, and surrounding areas when using explosives to blast rock off the slopes. Please stay out of these closed areas. Blasting is dangerous due to flying rock. People in the path of the flying rock could be seriously injured or killed.

Improving Safety on U.S. 26

In a ten year period (2002 to 2011), 301 crashes occurred along U.S. 26 between Camp Creek and Government Camp. Four people died in these crashes and 243 were injured, 29 of them seriously. An independent team of multi-disciplined professionals performed a Road Safety Audit of U.S. 26 in this area and identified engineering, enforcement, education, and emergency response solutions to reduce crashes. In the past few years, ODOT has implemented many of these solutions east of Rhododendron. ODOT is now constructing a project to address the safety concerns along U.S. 26 east of Kiwanis Camp Road to the junction with OR 35.

Learn More

To learn more and hear from our project managers and geologist, visit our online open house available starting March 21 at www.US26MtHoodSafety.org

*Exact closure dates will be posted at www.US26MtHoodSafety.org once determined



ODOT RealTime is a system that will help make roads safer and help Oregonians get where they're going more efficiently by providing real-time information to drivers.

Design is underway on the ODOT RealTime system on Mt. Hood. The proposed system includes:

- ▶ Travel time signs, which display estimated travel times to key destinations so that drivers can plan their arrival time or consider taking an alternate route.
- ▶ Advisory speed signs (figure -1) that display advisory speeds based on traffic ahead or pavement conditions such as wet, icy or snowy roads .
- ▶ Speed warning (figure -2) and curve warning signs that alert drivers about sharp curves and changing road conditions based on weather or congestion (figure -3).
- ▶ Replacing chain restriction signs so the signs can be changed remotely as weather conditions change.
- ▶ New cameras so travelers can check the conditions at www.TripCheck.com



figure-1



figure-2



figure-3

To learn more about the new signs visit the online Open House at www.mthood.odotrealtime.org

Submit comments from March 21-April 8.


Learn More

To learn more and hear from our project managers and geologist, visit our online open houses starting March 21 about the U.S. 26 Mt. Hood Safety Project and the ODOT RealTime Mt. Hood Project at www.US26MtHoodSafety.org and www.mthood.odotrealtime.org



What's Inside

ODOT is constructing a project to improve safety and preserve the highway along U.S. 26 and is designing a sign project to improve safety for travelers. Look inside to learn more about these projects coming soon on Mt. Hood.

- 
- Project Update
 - Work Completed in 2015
 - Upcoming Work
 - Impacts to Travel
 - Work Zone Safety
 - Online Open Houses